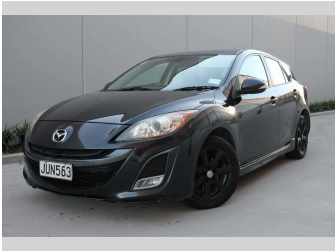


# 2009 Mazda Axela



### Purchase Price

Includes GST, Registration & Licensing

**\$6,500**

Finance may be available on this vehicle. Ask one of our friendly staff for more information.

Gain peace of mind with Mechanical Breakdown Insurance. **Ask us how.**

### Top features

None Listed

Body Style

**Hatchback**

Odometer

**169,570 km**

Engine

**1990 cc**

Fuel Type

**Petrol**

Transmission

**Automatic**

Wheels

-

VIN

-

Interior

**Black**

Safety



Based on 2024 UCSR rating for 09-13 models

Reg No.

**JUN563**

Ext Colour

**Black**

History

-

Seats

-

CO2 Emissions

★★★★★☆☆

**183 grams/km**

Energy Economy

★★★☆☆☆☆

**Annual fuel cost of \$2,980  
7.6L per 100km**

Cost per year is an estimate based on petrol price of \$2.80 per litre and an average distance of 14000 km. Emissions and Energy Economy figures standardised to 3P WLTP.

**Stock ID: 7067**



AANH Auto Group | Phone 09 940 9495 | Email [paylesscarsteam@gmail.com](mailto:paylesscarsteam@gmail.com)  
230 Neilson Street, Onehunga, Auckland 1061, New Zealand  
[www.paylesscars.co.nz](http://www.paylesscars.co.nz)